



Tech 2 Pro

Authentic General Motors Diagnostics in the Palm of Your Hand

The Complete GM Solution

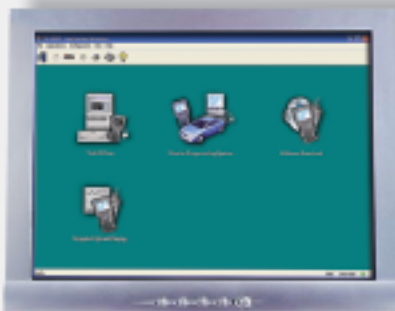
The Tech 2 has been an "essential tool" in General Motors dealerships worldwide since 1997. Now, you can put the same dealer software in your shop. When your business depends on maximum productivity, why settle for anything less?

Complete Solution Components

1 Tech 2 Scan Tool



2 Technical Information System (TIS)



3 Electronic Service Information (eSI)



Tech 2 Pro

Essential Features:

- Authentic GM software coverage from model year 1992 – current
- Covers all powertrain, chassis and body systems
- Enhanced diagnostics on GMLAN (CAN) vehicles with optional CANdi module
- Vetronix patented bi-directional control testing



CANdi Module



MTS 6100 Workstation



Scan Diagnostics

Program Card

Reprogrammable PCMCIA card contains application software, updated through a PC.

RS232 Serial Port

Connects to a PC, enabling all AC Delco TIS applications.

Custom Graphics Display

High visibility backlit LCD screen displays up to 9 PIDs, including custom lists, line graph mode and hot key access.

Technician-Friendly Design

Adjustable hand straps facilitate one-handed operation.

Logical Keypad

29-key hydrocarbon resistant membrane keypad for easy, logical tester navigation.



Vehicle Serial Data Link

Connects to vehicle DLC and supports GM OBDI, OBDII and GMLAN protocols.



What Makes the Tech 2 Different?



Access to All On-Board Systems



Multiplex Network Module Status



Enhanced GMLAN



Comprehensive OEM-Validated Bi-Directional Control Testing

To view more info on the Tech 2 Pro and our complete line of products, go to: www.vetronix.com/estore



2030 Alameda Padre Serra, Santa Barbara, CA 93103 USA
Ph: (800) 321-4889 Fax: (805) 965-3497